

Eradicating dormitory wards

Developing a new Older Adults Unit
for the people of Kent and Medway

Current situation

- Ruby Ward at Medway Maritime Hospital is the last remaining dormitory ward in K&M
- Outdated and old-fashioned dormitory ward - compromising safety, dignity, and privacy of patients
- Infection control issues – highlighted by challenges of COVID-19
- Very difficult for patients to access outside space
- Limited areas for visitors
- Shared bathroom

Ruby Ward – bed bay





Ruby Ward – bed bay



Ruby Ward – bed bay





Ruby Ward – bed bay



Shared bathroom in Ruby Ward





Outside area is difficult to access



Ruby ward's small lounge doubles as a visitor area



A new purpose-built facility

- £12.65m of government funding - an unprecedented opportunity to build a new facility
- Single ensuite bedrooms for 16 patients (rising from 14)
- Available to anyone who needs it wherever they live in Kent and Medway
- High-quality, safe accommodation is an integral part of the therapeutic process and has a significant bearing on the experience of patients, their families and loved ones
- A new purpose-built facility will offer greater privacy, access to outside space and improved infection control measures.

Example ensuite bedroom



Example ensuite bedroom



Ryo

Assisted bathroom





Lounge area

Lounge



Dining room



Dining Room



Garden area

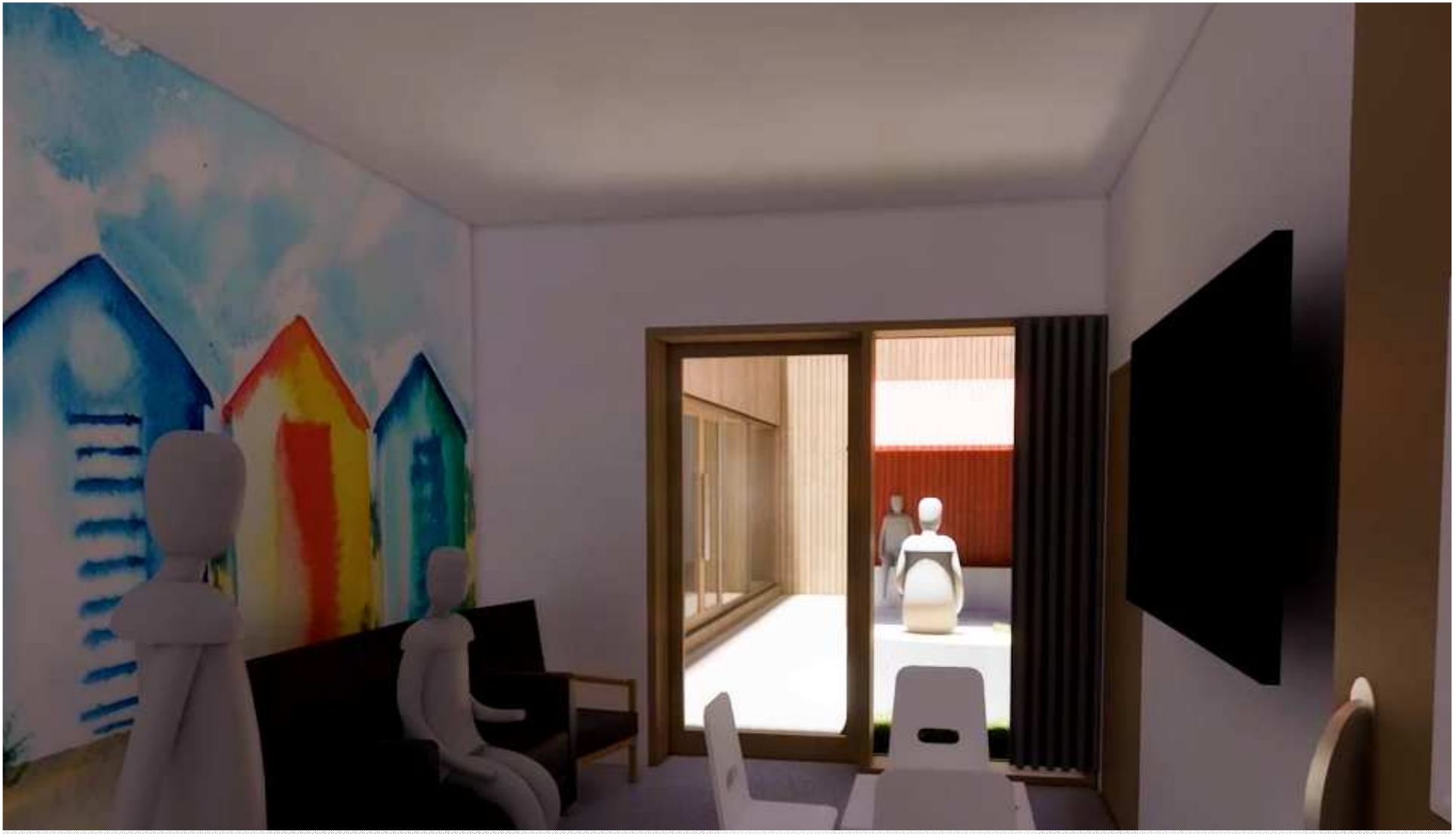
Ryder

Group activity room



up Room

Ryde



Family visiting room

iting Room



Family visiting outdoor space

Family Visiting Garden

Activities for Daily Living (ADL) kitchen area



Complex client room



Complex Client Room



Circulation

House Circulation

Seating by window





Quiet room

Ryder



De-escalation outdoor space



© Eindhoven

De-escalation room





Staff base



Staff Base



Staff offices



Eradicating dormitory wards – a new older adults unit for Kent and Medway



Care provided on outdated dormitory style ward – lacking privacy and dignity



No easy access to outside space



Shared bathrooms



Lack of dedicated visiting space



Ward set up makes it difficult to ensure infection control for this cohort of patients



Modern, purpose-built accommodation for older adults with mental health issues, including dementia.



Holistic caring, working environment for patients and staff



Ensuite bathrooms ensuring privacy and dignity



Light, airy, calm environment with easy access to outside spaces to ensure optimum levels of wellbeing



Designed to ensure infection control measures can be put in place with ease